



# Our Lady of the Wayside Catholic Church

566 Stratford Road, Shirley, Solihull B90 4AY

[www.ourladyofthewaysidechurchshirley.co.uk](http://www.ourladyofthewaysidechurchshirley.co.uk)

Tel: 0121 744 1967 Email: [olw.shirley@rcaob.org.uk](mailto:olw.shirley@rcaob.org.uk)

Online Giving: [olw.mydona.com](http://olw.mydona.com)

N

## SOLEMNITY OF OUR LORD JESUS CHRIST- YEAR B

24<sup>th</sup> NOVEMBER 2024

e

*Dear Parishioners, this weekend the solemnity of Christ the King is designated as National Youth Sunday, and a member of our youth group will speak at the end of our Masses about their experience of youth provision across the local parishes and how that links in with the Kenelm Youth Trust. Last Sunday we listened to Archbishop Bernard's twofold pastoral letter on the Assisted Suicide Bill and the new Lectionary coming into existence on the 1<sup>st</sup> Sunday of Advent. I am grateful to those parishioners who have written to our local MPs on the Assisted Suicide Bill and for copying me in to your correspondence. On the subject of the new lectionaries, the Archbishop mentioned how liturgical change often happens and this is a part of a process that began with the revision of the Roman Missal and how further liturgical books will be updated in the not-too-distant future. His Grace also expressed his gratitude to those who have donated towards the cost of the new lectionaries. They are not cheap. I have already received a donation towards the new books in memory of a loved one. If you would like to do the same, I would be very grateful indeed. God bless, Fr Andrew.*

w

s

i

### Church Opening Times:

The church is open for private prayer from dawn to 5.00pm.

### Parish Office Opening Times: Tel: 0121 744 1967

9.00am to 4.00pm Monday, Wednesday, Thursday.  
(Juliet)

9.00am to 4.00pm Tuesday. (Sue)

e

### Parish Contact Details.

**Parish Priest:** Fr Andrew Franklin. Email: [fr.andrew.franklin@rcaob.org.uk](mailto:fr.andrew.franklin@rcaob.org.uk)

**Parish Deacon:** Rev. Sean Loone. Email: [dcn.sean.loone@rcaob.org.uk](mailto:dcn.sean.loone@rcaob.org.uk)

**Parish Office:** Sue Cheshire. Juliet Ferrara. Email: [olw.shirley@rcaob.org.uk](mailto:olw.shirley@rcaob.org.uk) Tel: 0121 744 1967

**Safeguarding:** Dot Emm. Email: [sg.olw.shirley@rcaob.org.uk](mailto:sg.olw.shirley@rcaob.org.uk)

**School Headteacher:** Mrs Debbie Enstone. Email: [s79denstone@ol-wayside.solihull.sch.uk](mailto:s79denstone@ol-wayside.solihull.sch.uk)

**Liturgy:** Chris Rolinson. Email: [chris@solihullpiano.co.uk](mailto:chris@solihullpiano.co.uk) Tel: 07544 549000

**Catechists:** Bernie Hunt. Email: [bernadettehunt47@btinternet.com](mailto:bernadettehunt47@btinternet.com) Tel: 07790 829283

**Sacristy:** Bill Rawson. Email: [w.rawson187@btinternet.com](mailto:w.rawson187@btinternet.com) Tel. 07514 487588

**SVP:** John Nolan. Email: [presidentf021312@svp.org.uk](mailto:presidentf021312@svp.org.uk)

**Father O'Mahony Memorial Trust:** Maureen Jennings. Email: [mjfomt@gmail.com](mailto:mjfomt@gmail.com)

**Divine Mercy Group:** Paul Matthews. Email: [2020paulmatthews@gmail.com](mailto:2020paulmatthews@gmail.com) Tel: 07771 727000

**Journey in Faith (RCIA):** John Nolan. Email: [johnfpnolan@gmail.com](mailto:johnfpnolan@gmail.com)

**Youth Group:** Ray McNally. Email: [ray@extendaline.com](mailto:ray@extendaline.com) Tel: 07827 894446

**Treasurer:** Ian Swancott. Email: [pt.olw.shirley@rcaob.org.uk](mailto:pt.olw.shirley@rcaob.org.uk)

t

t

e

r

**Collections: 17<sup>th</sup> November 2024: Gift Aid: £344.00 Loose: £493.19 Standing Orders: £853.35 Total: £1690.54**

The Parish operates in accordance with Statutory Safeguarding Guidance and the National and Archdioceses policies & procedures at all times. Our Parish Safeguarding Representative is Mrs Dot Emm. She can be contacted at: [sg.olw.shirley@rcaob.org.uk](mailto:sg.olw.shirley@rcaob.org.uk), or alternatively the Diocesan Safeguarding team can be contacted on 0121 230 6240 or email: [safeguarding@rcaob.org.uk](mailto:safeguarding@rcaob.org.uk), if you have any concern.



**Online donations.** Scan the QR code with your smartphone or use the link to make an online donation <https://donate.mydona.com/our-lady-of-the-wayside> or use the machines as you enter the church. Thank you. For more information on donating please see the website or contact the parish office.



# *Liturgical Schedule*

<b>Sat 23<sup>rd</sup></b> 10.00am  5.30pm	<b>(Vigil Mass) Solemnity of Our Lord Jesus Christ</b> Holy hour and Confessions  Int. Bob Simons RIP Int. Catherine Stallybrass
<b>Sun 24<sup>th</sup></b> 10.00am	<b>Solemnity of Our Lord Jesus Christ</b> Int. Rose McDaid – Anniversary Int. Holy Souls
<b>Mon 25<sup>th</sup></b> 6.00pm	<b>No Mass</b> Reception into Church – Margaret Carter RIP
<b>Tues 26<sup>th</sup></b> 9.30am	<b>Feria in Ordinary Time</b> Funeral Mass – Margaret Carter RIP
<b>Wed 27<sup>th</sup></b> 9.30am	<b>Feria in Ordinary Time</b> Int. Kara McCormick
<b>Thurs 28<sup>th</sup></b> 9.30am	<b>Feria in Ordinary Time</b> Int. Michael Keaney RIP
<b>Fri 29<sup>th</sup></b> 9.30am	<b>Feria in Ordinary Time</b> Int. The Pearsall Family & Friends
<b>Sat 30<sup>th</sup></b> 10.00am  5.30pm	<b>(Vigil Mass) First Sunday of Advent</b> Holy hour and Confessions  Int. Margaret Clark RIP
<b>Sun 1<sup>st</sup> Dec</b> 10.00am	<b>First Sunday of Advent</b> Int. Joan & John Curtis RIP

# Liturgical and Spiritual . . .



RIP. Please remember in your prayers Margaret Carter who has died recently and all who mourn her. Margaret's Funeral Mass will be on Tuesday 26<sup>th</sup> November at 9.30am and she will be received into Church the evening before at 6.00pm.



**Our Lady's Candle.** This week it is lit for Ron Hull.



## Journey in Faith (RCIA) at Our Lady of the Wayside, Shirley.

For both those wishing to become Catholic as well as existing Catholics who wish to learn more about the riches of their faith. There are usually two sessions a month, each lasting from 7.00pm to 8.15pm, all on **Wednesdays** in the **Parish Hall**.

Any enquiries, please contact John Nolan on 07400 399000 or [johnfpnolan@gmail.com](mailto:johnfpnolan@gmail.com).

**The next meeting will be on Wednesday 27<sup>th</sup> November 2024**

*Why did Jesus have to die for us? Praying to the Saints. 40 Martyrs of England & Wales: St Ambrose Barlow, St Margaret Clitheroe.*

## Divine Mercy Prayer Group:

Meets every Monday evening at 6:45pm in the Parish Hall.

(Please note change of venue)



## Sacramental Programme

**First Reconciliation**  
**First Holy Communion**  
**Confirmation**



At the start of next year, we will begin our sacramental programme for children who attend non-Catholic schools.

Start date will be confirmed in the next few weeks.

Please contact the parish office for more information.

## Music at The Wayside

The musicians and singers at OLW love their role in assisting the people of God at Mass - but **you** could be part of it.

The team's work involves preparing the musical elements of the Liturgy, prayerfully rehearsing and musically leading it every week - but we have fun together too. Just this year alone we have visited local eateries from pubs to Italian, Indian and Chinese.

You only need a willingness to serve parishioners through music - we don't require any special 'expertise'.

Just speak to one of the team or call Chris on 07544-549000 for more information

## Holy Souls



This month we remember our deceased relatives and friends. Holy Souls envelopes are at the back of church for your completion. We will compile a parish Book of Remembrance and the names of our dearly departed will be read out at the end of Masses in November.

Donations are not compulsory, but if given, will be shared to help cover our utility costs, the SVP and the Fr O'Mahony Trust.



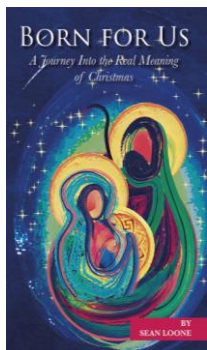
# Pastoral and Social Outreach . . .

The SVP offers confidential practical support for anyone in need. Please email [svpshirley@gmail.com](mailto:svpshirley@gmail.com).

SVP Food Bank. The food bank is very low on coffee, cereal, washing powder, toothpaste, shampoo, soap, tinned fruit, rice pudding, evaporated milk and kitchen rolls. In preparation for Christmas any items for a Christmas hamper. Thank you for your generosity.

## Clear out for CAFOD Sunday 1st December

Please bring your unwanted items, especially anything Christmassy, to the Parish Hall before 10am Mass next Sunday and then join us after Mass for a tea or coffee and to pick up a bargain! All proceeds to CAFOD



### 'Born For Us - A Journey Into the Real Meaning of Christmas'

We have a few copies of Deacon Sean's Book, 'Born For Us - A Journey Into the Real Meaning of Christmas' - which includes a photograph and chapter on OLV available at the piety stall. Failing that have a word with Deacon Sean. The price is £9.99.

### Missio Red Boxes.

Dear Missio Red Box supporters,  
The annual collection, count and distribution of the Mission red boxes will take place on the three weekends of the 9th/10th, 16th/17th & 23rd/24th November.

As usual, there will be a table in the narthex where we will be very happy to receive your red boxes. We will count the contents during the week and you can pick up your emptied red box with the total you have collected on one of the following weekends.

If you do not have a red box but would like to support the Church's missionary work, please just ask us for a box. This is a valuable way of expressing the call of each of us to pray for, support and live out our own missionary calling.

If you miss us for any reason or have any questions, please just email [johnfpnolan@gmail.com](mailto:johnfpnolan@gmail.com)  
Many thanks for your continuing support across the years.

### Youth Group

Our youth group is in need of board games/chess sets, snakes and ladders etc. If you are able to donate any of these, please bring them along to church.

Many thanks.

Ray McNally on 07827894446 or email [ray@extendaline.com](mailto:ray@extendaline.com).



### Blessing of Graves - at 2.00pm

Robin Hood & Wythall: Sunday 24th November



### OLW Pre-Christmas Lunch:

Sunday 15th December 2024 at The Regency Hotel, Stratford Road, Shirley, B90 4BE.  
Arrival time 12.30pm. Lunch will be served at 1.00pm in the Four Ashes Suite, followed by Christmas entertainment.

Please complete your reservation request using forms at the back of church by **Monday 9th December**.

MARMALADE SALE will be held after Masses on 23rd and 24th November, in the Narthex.

Proceeds in aid of the Father O'Mahony Memorial Trust



### SVP Advent 'Giving Tree'.

The 'Giving Tree' will appear by magic in the narthex for the start of the advent season beginning from the 5.30pm Mass on Saturday 30th November. As on previous occasions all you are asked to do is:

1. Take a tag.
2. Buy a present for the child whose age and gender is on the tag. (maximum spend £10)
3. Attach the tag to the wrapped present and place under the 'Giving Tree' no later than the 10am Mass on Sunday 15th December (Third Sunday of Advent)

Any presents donated prior to that date will be stored securely in the sacristy. The presents will be taken after the Sunday 15th 10am Mass to then be distributed to families in Birmingham whose needs are greater than ours at this time. May we thank you in advance for your ongoing kindness and generosity, the parish SVP group.



### Church Cleaning

Thursday 5th December, at 10.00am.

All are welcome.



At Our Lady of the Wayside we operate a 24x7 livestream service:

<https://www.youtube.com/@OurLadyoftheWayside>.



There is signage in the church to show the areas that can be seen. For more information, please visit our website <https://ourladyofthewaysidechurchshirley.co.uk/>.